



# Key Events in the Life of Bahá'u'lláh

## Activity Worksheet 1



Name: \_\_\_\_\_

Date: \_\_\_\_\_

Draw a line from the events in Bahá'u'lláh's life to the correct places.

Birth

Imprisoned and visited by the Maid of Heaven

Declares that He is God's most recent Messenger.

Writes letters to the Kings and rulers of the world

Bahá'u'lláh ascends and His bodily remains are placed in a Shrine

The Garden of Ridván

Tehran

The Síyáh-Chál (The Black Pit)

Israel

Adrianople

Lesson self-assessment: 😞 😐 😊



# Key Events in the Life of Bahá'u'lláh

## Activity Worksheet 2



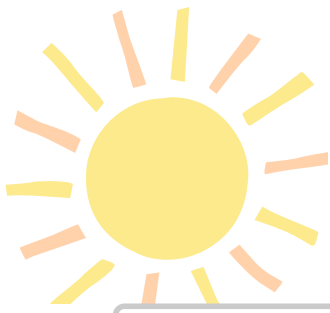
Name:

Date:

Draw a line from each year to the correct event in Bahá'u'lláh's life.

1817	Exiled to Baghdad
1852	Imprisoned in the Siyáh-Chál
1853	Birth
1863	Stays at the Garden of Ridván
1863	Goes to the Prison city of 'Akká
1868	Ascension (The year He dies.)
1892	Exiled to Adrianople

Lesson self-assessment:



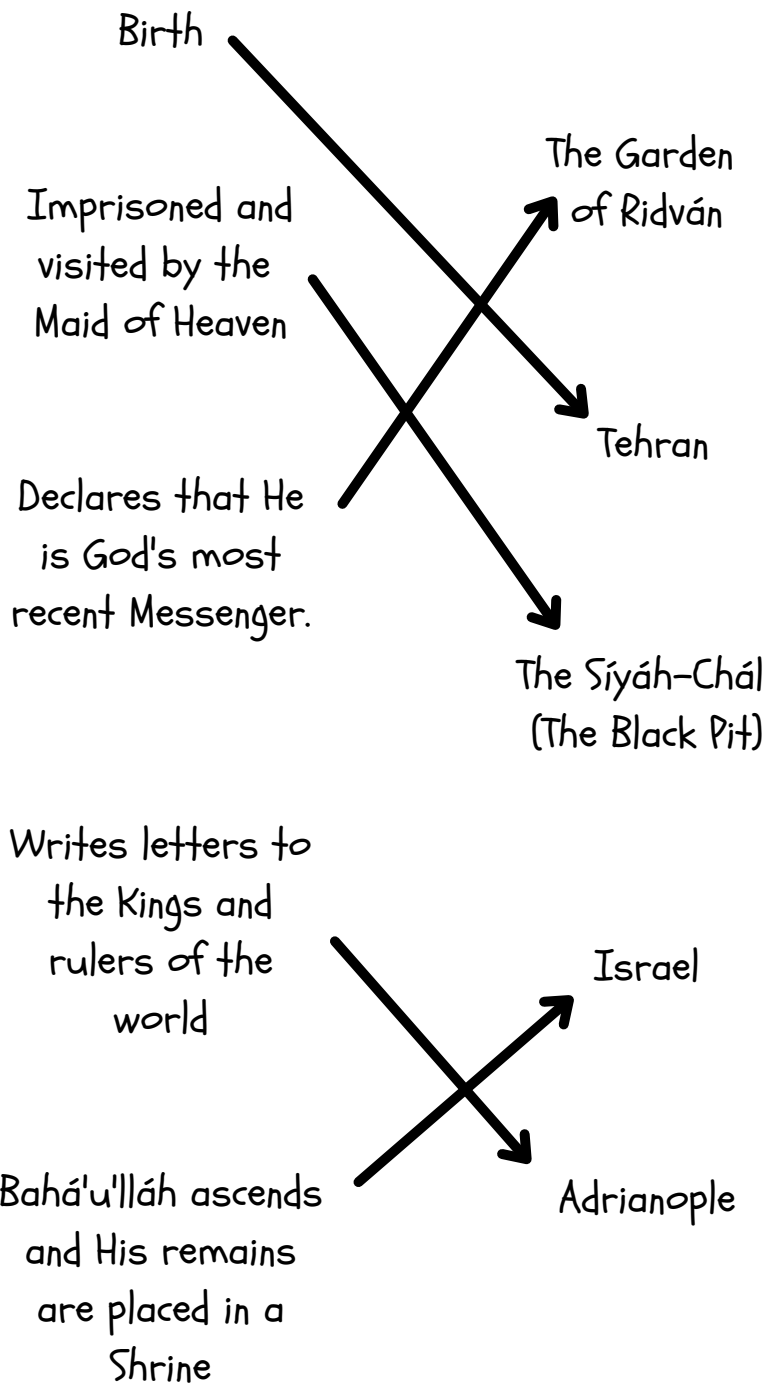
Key Events in the Life of Bahá'u'lláh  
Activity Worksheet 1 - ANSWER SHEET

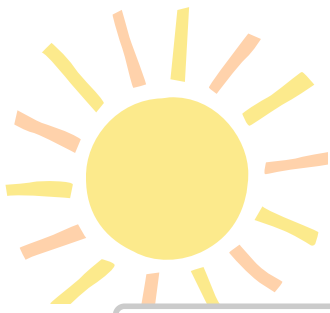


Name:

Date:

Draw a line from the events in Bahá'u'lláh's life to the correct places.





Key Events in the Life of Bahá'u'lláh  
Activity Worksheet 2 - ANSWER SHEET



Name:

Date:

Draw a line from each year to the correct event in Bahá'u'lláh's life.

